



**16 Plimsoll Street Sans Souci NSW**

4 2 4

Arriving at this address will always generate a smile. As you access the home you are greeted with an open planned lounge area. Polished timber floors are on display as it leads down the hallway.

The lower level offers an abundance of natural light which beams into the oversized kitchen throughout the day. Full of quality appliances and ample storage space, the kitchen area is perfectly positioned to allow the home to maintain its open floor plan.

Making your way up the timber finished staircase you will find an additional open layout which ideally could be used for a second entertaining room / childrens lounge room.

**Type** : House  
**Price** : SOLD  
**Land Size** : 594 sqm  
**View** : <https://www.jpagents.com.au/sale/nsw/st-george/sans-souci/residential/house/5847252>

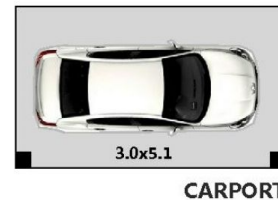
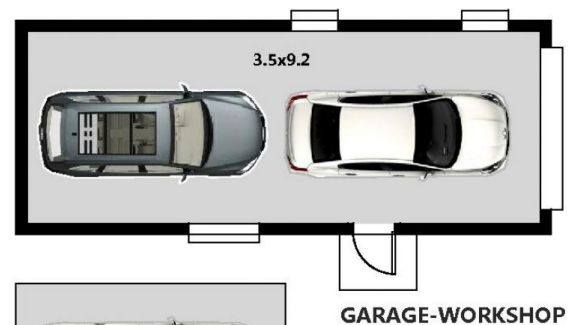
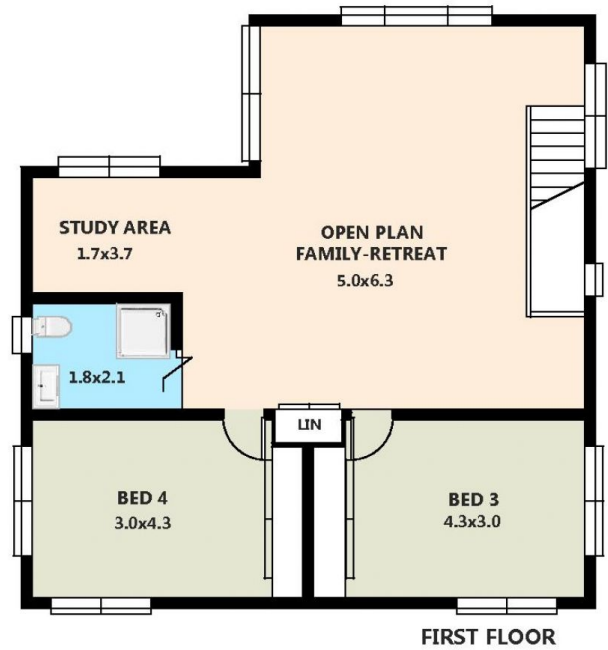
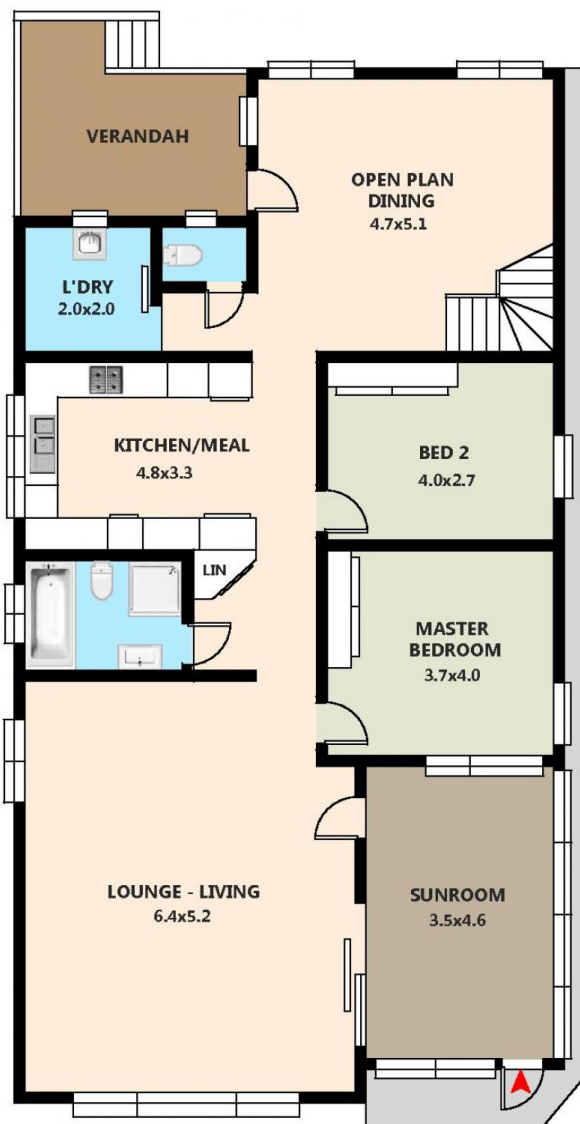


**James Johnson**  
**0415814740**

[For full version visit the website](https://www.jpagents.com.au)

<https://www.jpagents.com.au>

# 16 Plimsoll Street Sans Souci NSW 2219



DISCLAIMER: THIS IS FOR ILLUSTRATIVE PURPOSES ONLY. ALL DIMENSIONS ARE APPROXIMATE AND IT DO NOT CONSTITUTE PART OF ANY LEGAL DOCUMENTS.  
All dimensions are approximate Actual dimension may vary