



1/688 Rocky Point Road Sans Souci NSW

2 1 1

This double brick unit is ready for the savvy investor, downsizer or first home buyer!

Showcasing a total of approximately 98sqm, this 2 bedroom water facing, elevated first floor security unit with intercom ticks all the boxes.

With high ceilings, and an abundance of light, you'll enjoy the floating timber floors in the hallway and the open planned dining and living areas, before you step out to the full length balcony with ample room for entertaining or barbecues, relaxing after a short stroll to the beach or enjoying the beautiful sunsets.

Both bedrooms are fitted with carpet and built in robes,

[For full version visit the website](#)

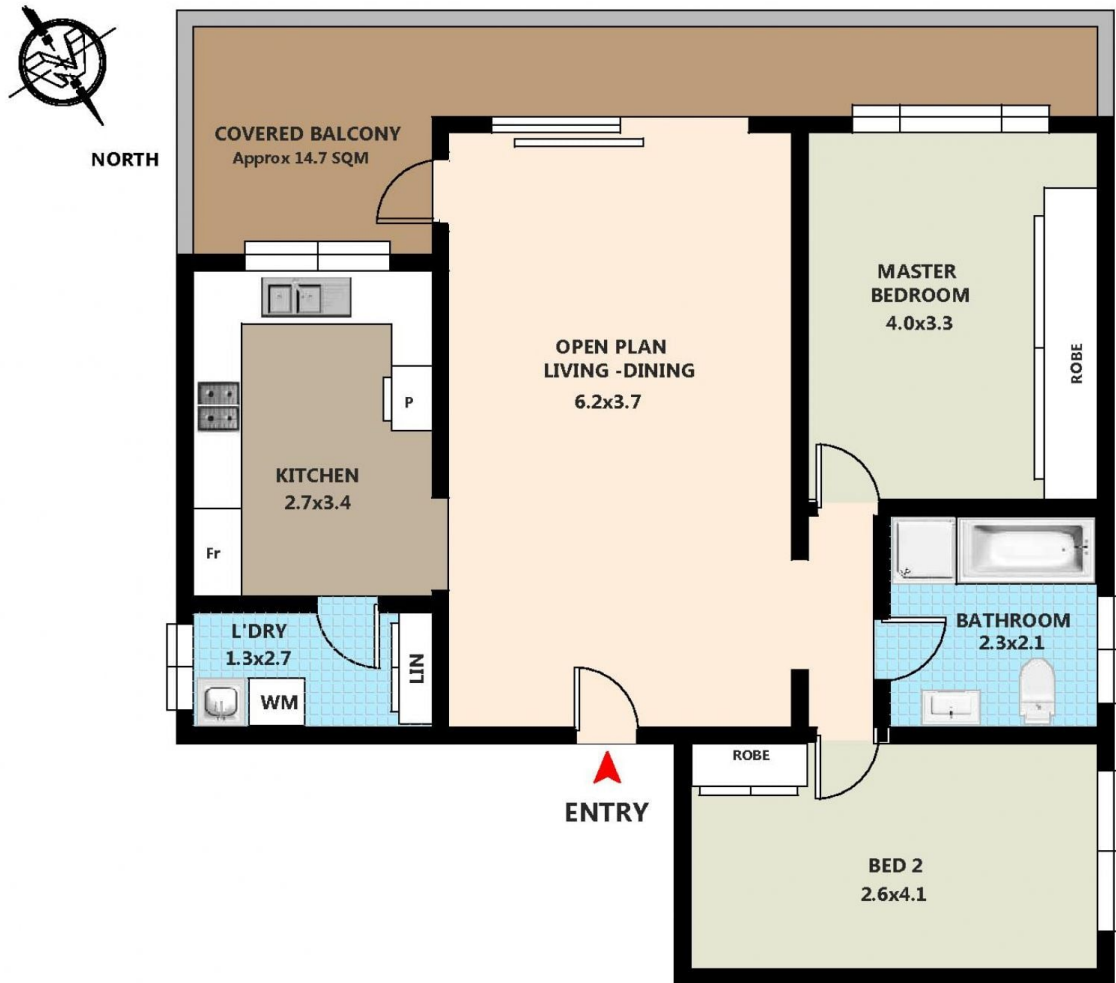
Type : Unit
Price : SOLD
View : <https://www.jpagents.com.au/sale/nsw/st-george/sans-souci/residential/unit/5847256>



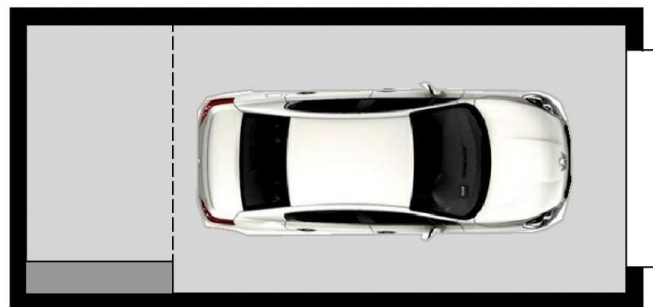
James Johnson
0415814740

<https://www.jpagents.com.au>

1/688 Rocky Point Rd Sans Souci NSW 2219



UNIT FLOOR AREA	69.80 SQM
BALCONY FLOOR AREA	14.70 SQM
GARAGE FLOOR AREA	18.09 SQM



GARAGE/ WORKSHOP

2.7x6.7

DISCLAIMER: THIS IS FOR ILLUSTRATIVE PURPOSES ONLY. ALL DIMENSIONS ARE APPROXIMATE AND IT DO NOT CONSTITUTE PART OF ANY LEGAL DOCUMENTS.
All dimensions are approximate Actual dimension may vary