



#### 4/686 Rocky Point Road Sans Souci NSW

2 1 1

Quietly located at the rear of the complex, this two bedroom apartment is a must see for the first home buyer or property investor.

Special features include a renovated kitchen, spacious lounge, dining areas and two bedrooms with built-in robes. Quality timber flooring is on show allowing a warm homely feel to be present at all times.

Located at the rear entrance of this property is the lock up garage, allowing direct access into your home.

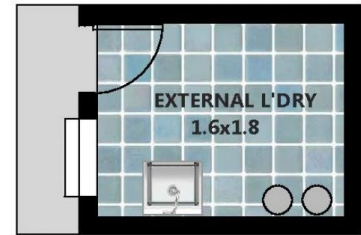
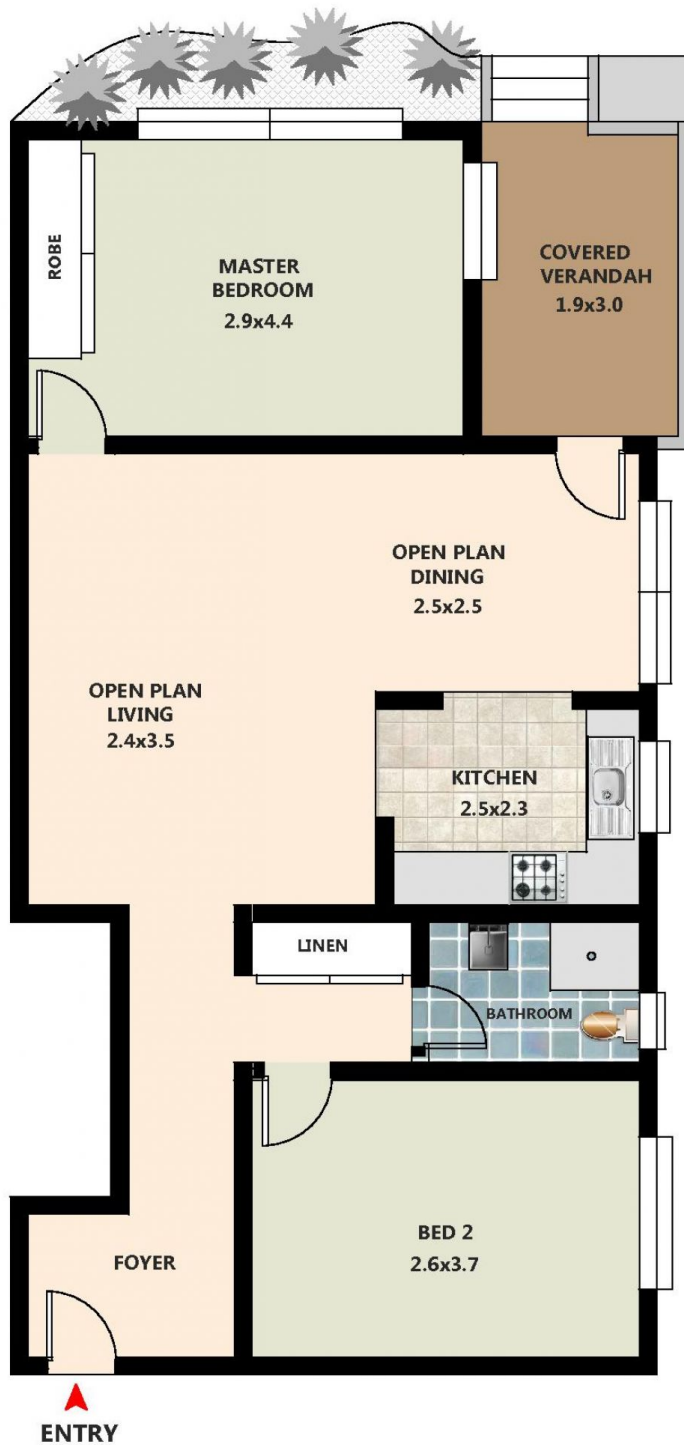
Only meters from beautiful waterways, local cafes and a short stroll to both St George Sailing Club and Motor Boat Club. We welcome all enquires and look forward to meeting you at our Saturday property showcase.

**Price** : Sold  
**Building Size** : 69 sqm  
**View** : <https://www.jpagents.com.au/sale/nsw/st-george/sans-souci/residential/unit/5847265>



**James Johnson**  
0415814740

# U 4/686 Rocky Point Road Sans Souci NSW 2219



NO' 4



LOCKUP GARAGE

DISCLAIMER: THIS IS FOR ILLUSTRATIVE PURPOSES ONLY. ALL DIMENSIONS ARE APPROXIMATE AND IT DO NOT CONSTITUTE PART OF ANY LEGAL DOCUMENTS.  
All dimensions are approximate Actual dimension may vary. b4build75@gmail.com Floor Plan By b4build75.com